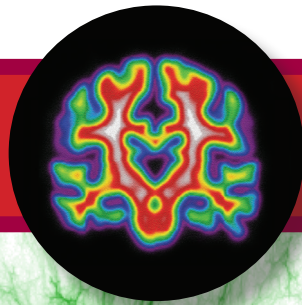




The McGill Centre for Studies in Aging presents :

Douglas
INSTITUT MENTAL HEALTH
UNIVERSITAIRE EN UNIVERSITY
SANTÉ MENTALE INSTITUTE



MOLSON LECTURE SERIES ON ALZHEIMER'S DISEASE

THE DIAN AND DIAN-TU TRIALS BY DR. RANDALL BATEMAN, M.D.

In 2008, the NIH funded the establishment of the Dominantly Inherited Alzheimer Network (DIAN, www.dian-info.org), an international network of leading research centers to investigate dominantly inherited AD. In 2012, the DIAN-TU (Trials Unit) launched the first prevention trials for autosomal dominant AD. The DIAN-TU has developed an adaptive design to test multiple AD targets with the goal of prevention and intervention of cognitive decline in autosomal dominant AD. The DIAN Expanded Registry (www.DIANXR.org) is an international participant and researcher registry for DIAN-TU trials. The scientific knowledge gained from secondary prevention trials is likely to inform about the cause of AD, validate biomarkers to accelerate treatment development, and determine the effects of treating AD early.

This lecture will be held on Thursday, May 30, 2013 at 11:00 a.m.

**Douglas Mental Health University Institute
6875 LaSalle Boulevard, Verdun QC H4H 1R3 • Pavilion Douglas Hall
For more information : silvana.aguzzi@mcgill.ca**

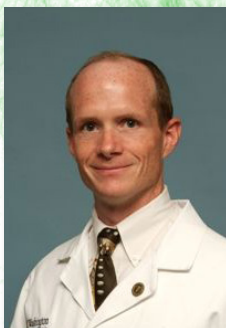
RANDALL BATEMAN, M.D.

Dr. Bateman is a world-renowned clinician-scientist leading the development of novel disease modifying treatments for Alzheimer's disease.

Dr. Bateman is the Director of the Dominantly Inherited Alzheimer's Network Therapeutic Trials Unit (DIAN TTU), which is a first clinical trial in autosomal dominant Alzheimer's disease (ADAD). Dr. Bateman also serves as the Associate Director and Clinical Core Leader of the DIAN, an international collaboration of leading research centers dedicated to studying autosomal dominant Alzheimer's disease (ADAD). DIAN TTU aims to prevent Alzheimer's dementia.

Dr. Bateman's laboratory investigates the causes, and methods for preclinical diagnosis and treatments of Alzheimer's disease utilizing a wide variety of assays and techniques. Dr. Bateman's lab determined that clearance of amyloid beta is impaired in patients with Alzheimer's disease.

Dr. Bateman's honors include the AAN Foundation Corporate Roundtable Clinical Research Fellowship, an American Neurological Association Plenary Session Speaker, a World Technology Award Nominee for Health and Medicine Associate, Scientific American 50 Award recognizing the top 50 scientific achievements of 2006, the Kopolow Award, the 2007 Alzheimer's Research Forum Community Award, the Beeson Award, the St. Louis Academy of Science Innovator of the Year award, the Co-recipient of the Health Care Heroes in Innovation by the St. Louis Business Journal, the Glenn Award for Research, the 2011 Alzheimer's Association Zenith Fellows Award, the 2011 Alzheimer's Research Forum Open Innovation Award and the 2012 MetLife Promising Investigator Award.



SPONSORED BY THE MOLSON KNOWLEDGE
EXCHANGE FUND



IN PARTNERSHIP WITH

